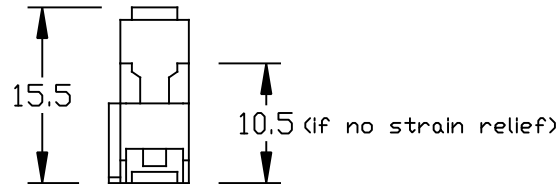
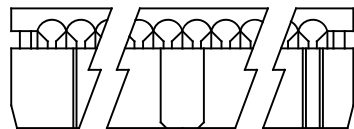
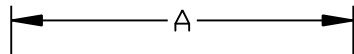
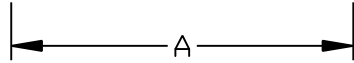
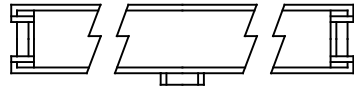
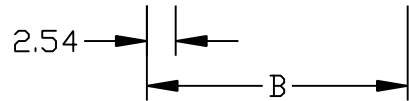
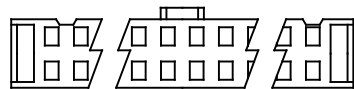


DSI SERIES: 0.1" IDC RIBBON CABLE SOCKETS



1.9 (6-pos)
3.8 (all others)



DIMENSIONS

POSITION	A	B	POSITION	A	B
6	12.34	5.08	26	37.72	30.48
10	17.40	10.16	30	42.80	35.56
12	19.94	12.70	34	47.88	40.64
14	22.48	15.24	40	55.50	48.26
16	25.02	17.78	50	68.20	60.96
20	30.10	22.86	60	80.90	73.66
24	35.18	27.94	64	85.98	78.74

1. INSULATOR: PBT (UL 94V-0)
2. CONTACT PLATING: SELECTIVE GOLD FLASH OVER NICKEL
3. OPERATING TEMPERATURE: -40°C TO +105°C
4. RECOMMENDED RIBBON WIRE: 0.05"/1.27MM PITCH, 28 AWG

DIMENSIONS ARE IN MILLIMETERS

DESCRIPTION:

DSI SERIES: 0.1" IDC SOCKETS



Winford Engineering
4561 Garfield Road
Auburn, MI 48611

www.winford.com

989-671-9721